

Help the Friends Build Cannonball Gardens

Project Goal \$125,000

Mason City Parks
to contribute initial
\$25,000 in 2014.

Friends of the 457
to raise the remainder
in grants, contributions,
and donations from the
North Iowa Community.

Contributions can be for
specific items and fitted with a
brass plaque of recognition,
such as;

\$5,000 or more: One of 6 walls.

\$2,000 or more: Benches.

\$1,000 or more: Lamppost.

\$500 or more: a brick step.

\$100 or more: Engraved brick.

Under \$100: Tree or shrubbery
with name on Recognition Board

Recognition Applications may be picked up at
City Hall or requested from: CB Gardens,
365 Sumac Rd, Mason City, IA 50401
dandawilson@netconx.net or downloaded
from www.friendsofthe457.org

All checks made payable to
Cannonball Gardens
365 Sumac Rd
Mason City, IA 50401.

For additional information call:
Dennis Wilson 641-423-5328 or
Bob Berggren 641-420-1999.



EDUCATIONAL CENTER TOPICS

Iowa Railroad History

- * Iowa Railroad Trackage Map
- * 1852: First Iowa Railroad.
- * First 4 railroads in Iowa.
- * 1856: 68 miles to Iowa City.

ORPHAN TRAINS

- * Operated 1854 to 1929.
- * Transported 250,000 West.
- * Iowa received 10,000
- * Greatest mass movement of
children in history of nation.

EAST PARK HISTORY

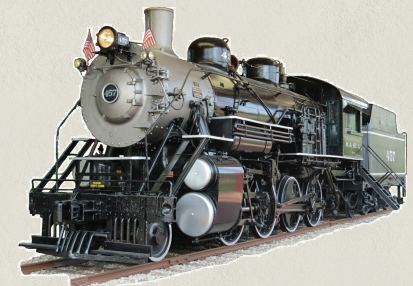
- * 1908: First Park Commission.
- * 1909: Landscape artist hired.
- * 1909: Willow Creek rerouted.
- * 1915: Zoo opens with two alligators,
two foxes and three wolves.



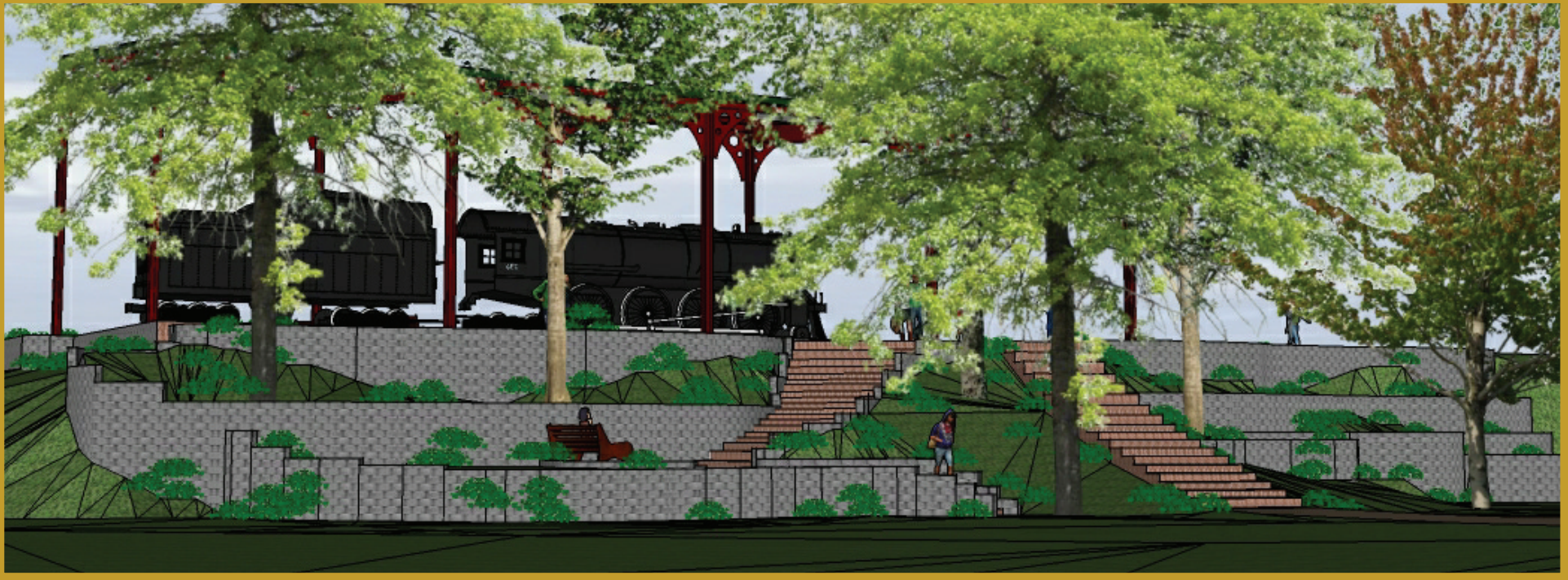
Cannonball Gardens

A Friends of the 457 Project

In Cooperation With
The Mason City Parks Department



The Friends of the 457
is a dedicated group of volunteers
organized in 2004 to restore and
preserve the the M&S'L 457,
an historic 1912 steam locomotive,
known in the community as the
Rotary Cannonball.



CANNONBALL GARDENS

EAST PARK, MASON CITY, IOWA

EDUCATIONAL CENTER

PRESERVATION

- Stabilization of Site
- Minimize Future Erosion
- Permanent Retention

- Iowa Rail History
- Orphan Train History
- East Park History

PARK BEAUTIFICATION

- Attractively Landscaped Area
- Relaxing Terraces
- Enhance Path and Trail Network Within Park